

# European Programs and European Incentives to Post- Graduate Education



Acute Cardiac Care  
ESC Working Group

# ESCeL Platform

## MISSION STATEMENT

"The highest European standard of training and education, to as many as possible, at the lowest cost possible"



ESCeL

eLearning Platform

# ESCeL Platform version 1.0 (2012)



**Acute Cardiac Care**  
ESC Working Group



ESCeL  
eLearning Platform

# ESCeL Platform TASK FORCE MEMBERS

**Lino Goncalves, Chairperson**

**Jens-Uwe Voigt, EAE**

**Kevin Fox, EAE**

**Hein Heidbuchel, EHRA**

**Katja Zeppenfeld, EHRA**

**Martine Gilard, EAPCI**

**Lale Tokgozoglu, EACPR**

**Stefan Anker, HFA**

**Susanna Price, WG ACC**



**Acute Cardiac Care**  
ESC Working Group

# ESCeL Project for the Specialty Centre

## Key Points:

- Use of a **uniform, user-friendly** platform, with a **reduced cost**.
- There is **no intention to take over** the role of the different sub-specialties in the training process. The goal is just to **provide a tool/service**.
- Maintain the sub-specialty **autonomy**. It is up to the sub-specialties **to define** the procedures and contents **according to their needs and strategy**.
- The goal is to **harmonize** some areas of the **training process** across the different sub-specialties and across Europe.

# European Need for Harmonization

A BMJ article, based on a longer report written for the European Union, called attention to "a cocktail of catastrophic events" that puts "unprecedented scrutiny on the competence of doctors and the privilege of self regulation". This in turn leads to examination of the heterogeneity of country systems for regulating and delivering continuing professional development- - and the lack of mandatory requirements in all countries. The authors argued for **EU-wide standards of accreditation**, an emphasis on outcome rather than process, and a core set of principles -- leading to **substantive equivalency**.

T Horsley et al. BMJ 2010

# Sub-specialities Education - Current Status -

Item	EAPCI		EHRA		EAE		HFA		EACPR	
	Need	Exists	Need	Exists	Need	Exists	Need	Exists	Need	Exists
Core syllabus	✓	✓	✓	✓	✓	✓	✓	✗	✓	✗
Core curricula	✓	✓	✓	✓	✓	✗	✓	Some	✓	✓
Knowledge - Content	✓	✓	✓	✓	✓	✓	✓	✓	✓	✓
Knowledge - MCQs	✓	✗	✓	✓	✓	✓	✓	✗	✓	✗
Skills - Logbooks	✓	✗	✓	✓	✓	✓	✗	✗	✗	✗
Skills - DOPS	✓	✗	✗	✗	✓	WIP	✗	✗	✗	✗
Professionalism	✓	✗	✓	✗	✗	✗	✗	✗	✗	✗
Exams & certificates	✗	✗	✓	✓	✓	✓	✗	✗	✗	✗
Lab accreditation	✗	✗	✓	✓	✓	✓	✗	✗	✗	✗



# ESCeL Platform for Sub-specialities - A modular Approach -

## Knowledge Assessment



Module 1  
Module 2  
Module 3  
Module 4

**Core Syllabus**

**Core Curriculum**

**Knowledge Content**

**MCQs database  
& exam services**

## Practical Skills Assessment



Module 5  
Module 6  
Module 7  
Module 8

**Clinical cases -logbook**

**DOPs**

**Procedures logbook**

**Patient Safety**

## Professionalism



Module 9  
Module 10

**360° Appraisal**

**Professionalism**



# ESCeL Platform for Sub-specialities

## Key Points:

- The intention is to **provide a flexible, modular** and reusable tool, which reduces and pulls the development and costs.
- The sub-specialities **are** the decision process.
- **ESC and Sub-specialities** can provide certificates of excellence (of completion of curricula), but they **cannot deliver national certification** (only National Accreditation Authorities can do it).



Acute Cardiac Care  
ESC Working Group



ESCeL

eLearning Platform

# ESCeL Platform for the Specialty Centre

## What did we achieve so far?



EUROPEAN  
ASSOCIATION OF  
Echocardiography  
A Registered Branch of the ESC



EUROPEAN  
Heart Rhythm  
ASSOCIATION  
A Registered Branch of the ESC



HEART FAILURE  
ASSOCIATION  
OF THE ESC



EACPR  
A Registered Branch of the ESC

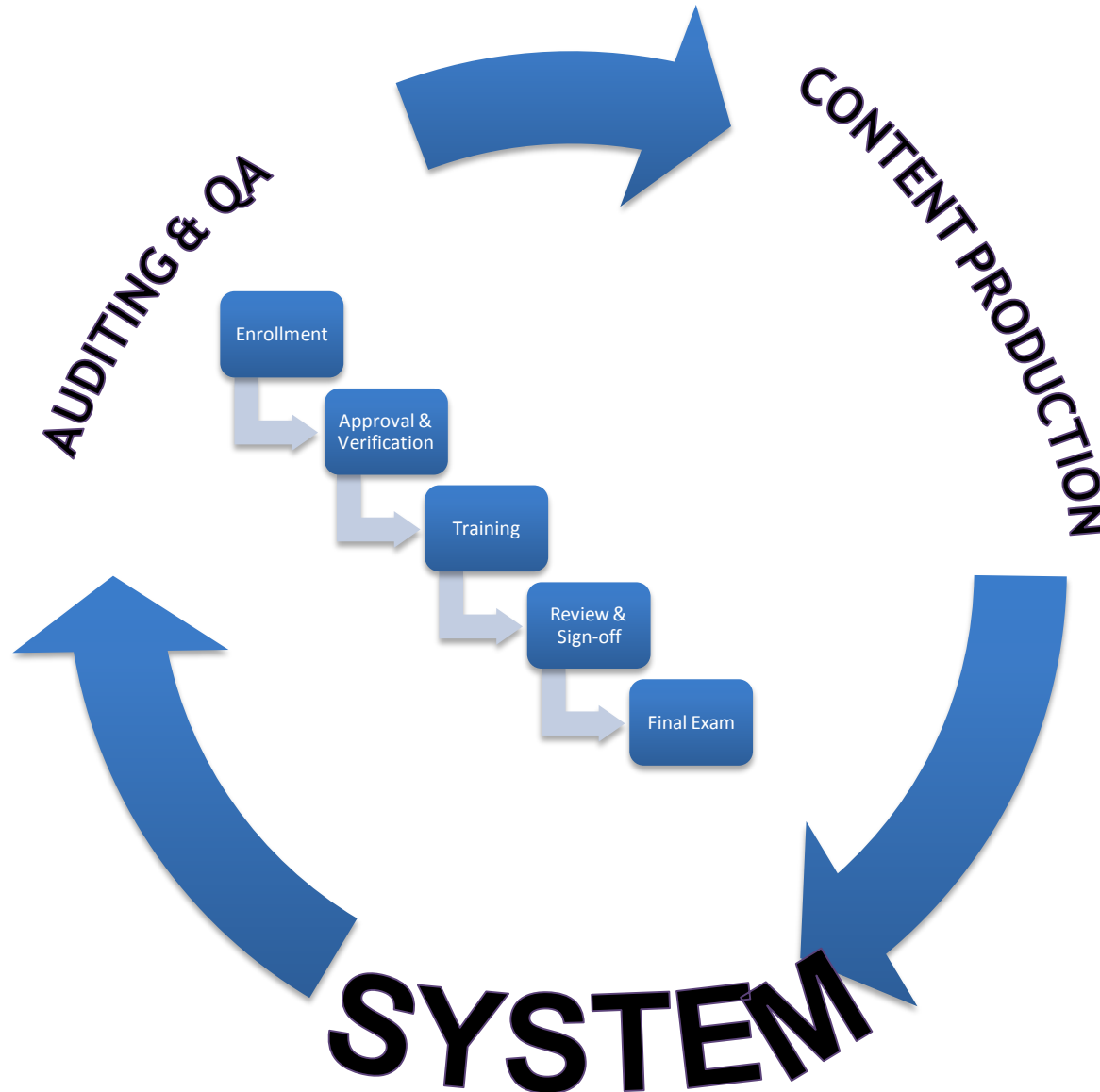


EAPCI  
A Registered Branch of the ESC

Acute Cardiac Care  
ESC Working Group

# Key Workflows

## High-level Processes



# Distributed Responsibilities

## ESC:

Platform & Technology  
Development

Maintenance, Support,  
Facilitation

Oversight and Governance

Content Resources

## Subspecialties:

Curriculum Structure &  
Requirements

Manage Learning Content

Oversight (Audits)  
Grading

Final Sign off & exam

## National Societies:

### Verification

- Trainee
- Local Trainer
- Program Directors
- Hospitals

Facilitate / Coordinate  
with Hospitals & Program  
Directors

## Hospitals / Programs: training director & local trainer

Day-to-day Oversight &  
Review

Verification/ certification  
/grading of log book's  
clinical cases, of  
Procedure's numbers, of  
Professionalism's contents  
Monthly discussions w/  
trainees regarding their  
evolution



ESCeL

eLearning Platform

ESCeL Back office

European Association/WG/WG

European Auditor PT

European Auditor ES

European Auditor UK

Logbook/procedures

Logbook/procedures

Europe

Portugal

National Scientific Society/ Association/ WG

Hospital ...

Training Director

Trainee

Local Trainer

Trainee

Local Trainer

Hospital 1

Training Director

Trainee

Local Trainer

Trainee

Local Trainer

Spain

National Scientific Society/ Association/ WG

Hospit al ...

Training Director

Trainee

Local Trainer

Trainee

Local Trainer

Hospital 1

Training Director

Trainee

Local Trainer

Trainee

Local Trainer



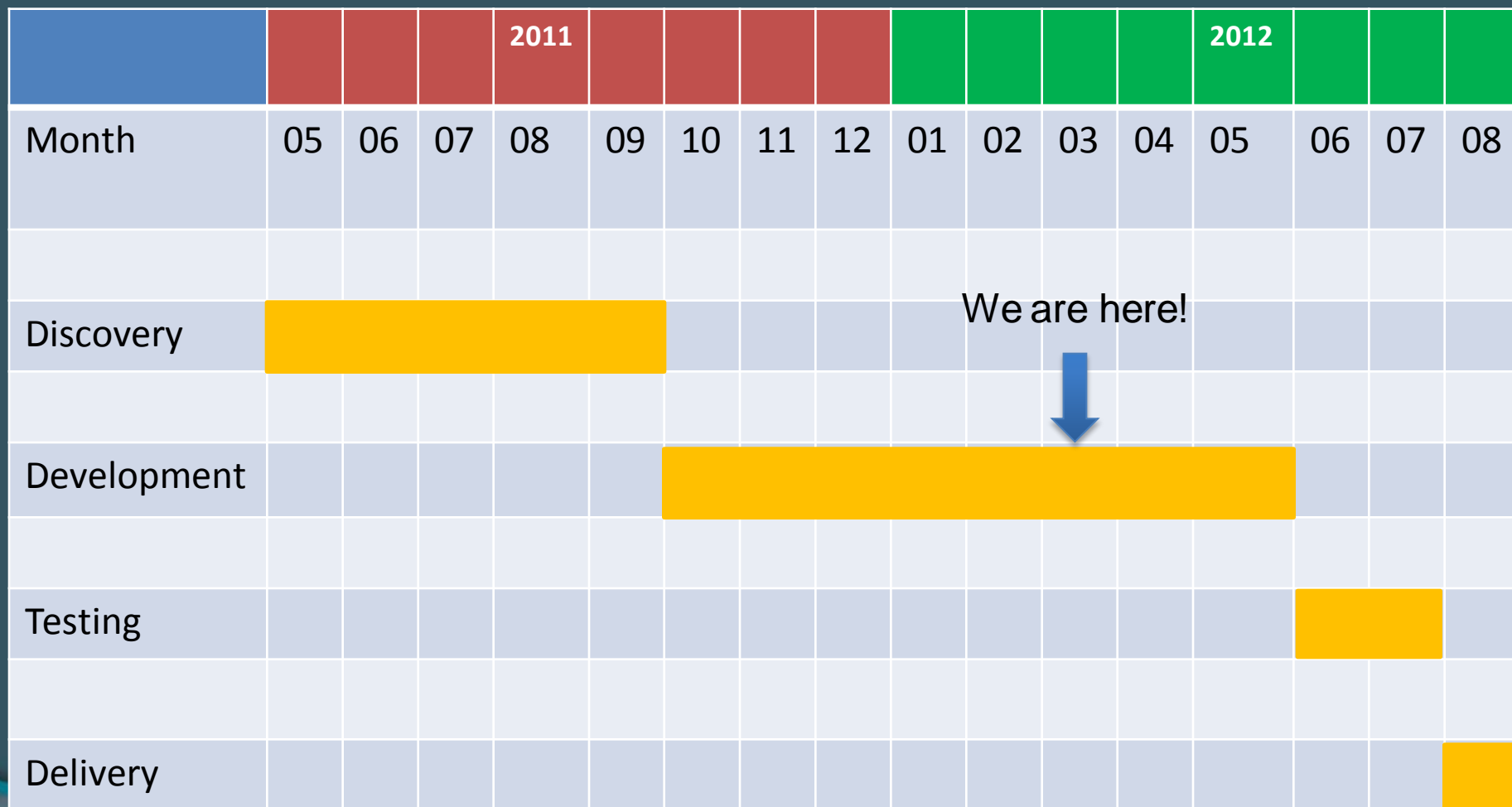
ESCeL

eLearning Platform

# ESCeL Demo

[start.html](#)

# Next Steps





# A BIG THANK YOU!

## ESC Staff members who are involved in the ESCeL project:

Isabel Bardinet - CEO  
Sophie Squarta - Specialty Centre  
Ludivine Roy - Communications  
Cyril Moulin - Scientific Affairs  
Pierre Fauquenot - Information Systems  
Marielle De La Torre - Specialty Centre  
Svya Faraim Fanchon - Specialty Centre  
Stephanie Deambrosis - Specialty Centre  
Celine Serio - Specialty Centre  
Camille Pfaff - Specialty Centre  
Francois Durand - Specialty Centre  
Susan Del Gaiso - Specialty Centre  
Marie Tesseron - Cardiologists of Tomorrow Group  
Valerie Laforest - Communications  
Christophe Graziani - Information Systems  
Nicolas Williams - Information Systems  
Line Joubert - Education in Cardiology  
Julie Poirey - Education in Cardiology  
Celine Carrera - Education in Cardiology

# ESCeL Platform version 2.0 (2013)

**New !**

- General Cardiology (UEMS-CS)
- CME/CPD
- Social networking
- National languages translation
- National educational products in parallel

# ESCeL Platform

## MISSION STATEMENT

"The highest European standard of training and education, to as many as possible, at the lowest cost possible"

# Financial Resources' Distribution

## - A Proposal -

European level

Trainee's fee

For Using the ESCeL  
Platform

ESC Central

Unrestricted grants from industry

For ESCeL educational materials  
development/maintenance

European Association/WG

National level

Unrestricted grants from industry/  
institutions

For educational materials  
development/maintenance

National Society

National Association/WG

# ESCeL Platform

## Take Home Messages

If you want to join this project we would like to kindly ask you to:

1. Communicate widely this project at the National level.
2. Identify the responsible persons for the project within your NS.
3. Start the lobbying at the NAA level.
4. Prepare your NS for the production/translation of educational materials.
5. Start to communicate with industry partners at the national level.